



20 24

**REC FOUNDATION
EVENT PARTNER
SUMMIT**

**VIQRC and
Competition Integrity**



Carol Kujawa, Director of Regional Operations
Dan Troy, Director of Regional Operations
Pat Price, Regional Support Manager



CAROL KUJAWA

DIRECTOR OF REGIONAL OPERATIONS



DAN TROY

DIRECTOR OF REGIONAL OPERATIONS



PAT PRICE

REGIONAL SUPPORT MANAGER



Discussion Flow

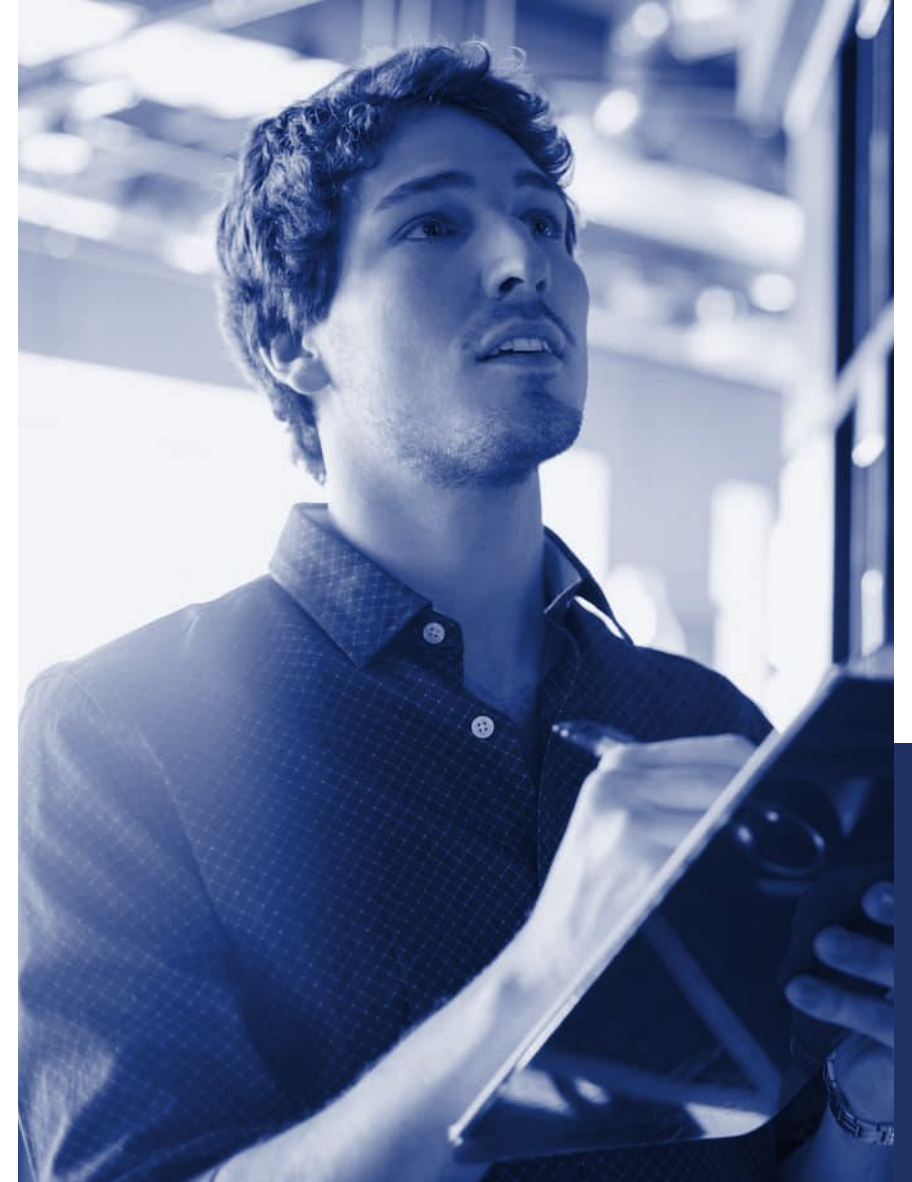
50 Minutes

- 10-15 minutes
 - The Issue as We Saw It
 - Event Partner Experiences
- 35-minutes
 - Our response

VIQRC and Competition Integrity

The Challenge

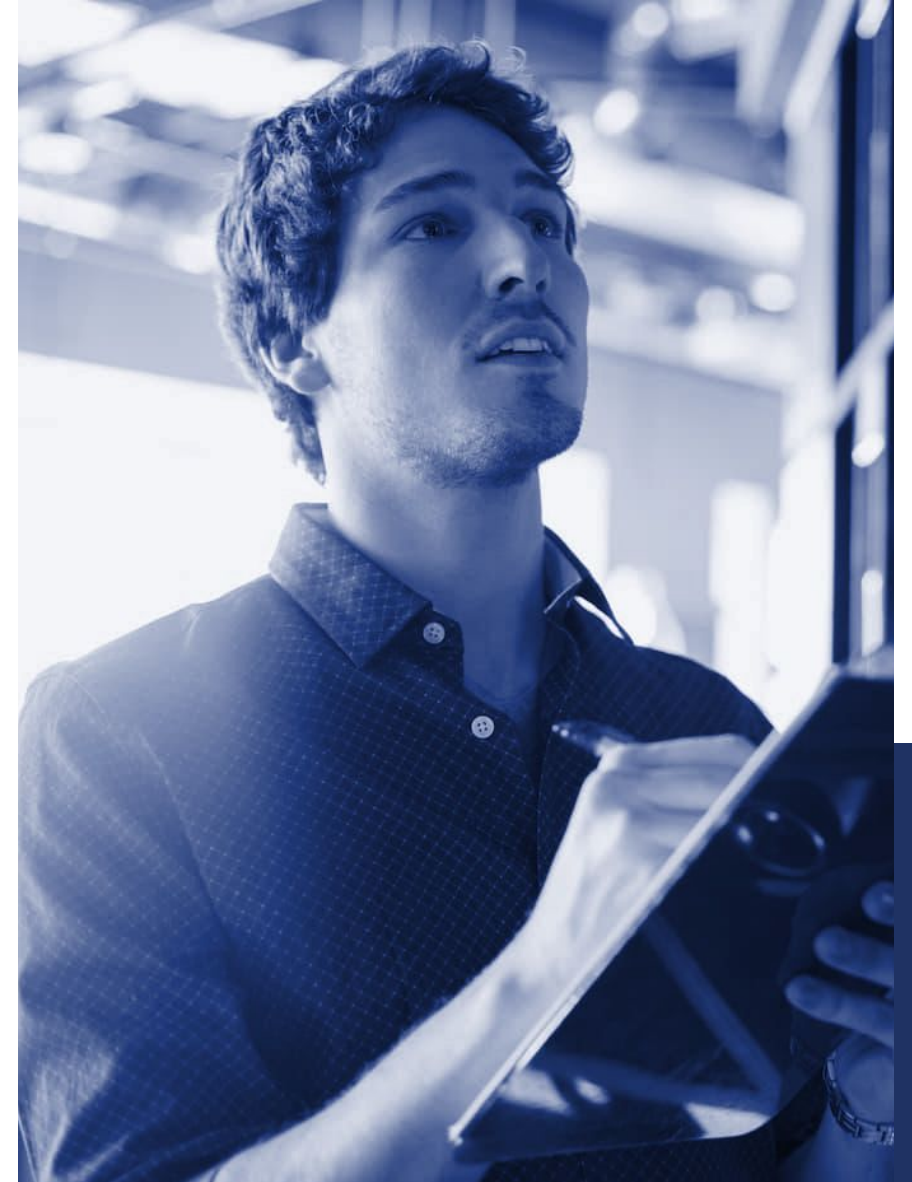
- Perceived competitive imbalance between teams/organizations
- Primarily in VIQRC
- Non-student centered behavior and Code of Conduct violations
 - Game manual violations
 - Copy-bots
 - Adult involvement
 - Illegal parts



VIQRC and Competition Integrity

Event Partner Experiences

- What have you experienced





VIQRC and Competition Integrity

Strategic discussion about the present and future of VIQRC including steps we can take to ensure a great experience for all.

The REC Foundation and the Game Design Committee are highly invested in making VIQRC and V5RC fair competitions for all

- Internal project team met last season to scope the problem and brainstorm solutions
- Must be effective, but not so heavy-handed that it adversely affects teams who are abiding by the rules
- Must fit within the capabilities of Tournament Manager technology and the existing VIQRC and V5RC Tournament structures



VIQRC and Competition Integrity

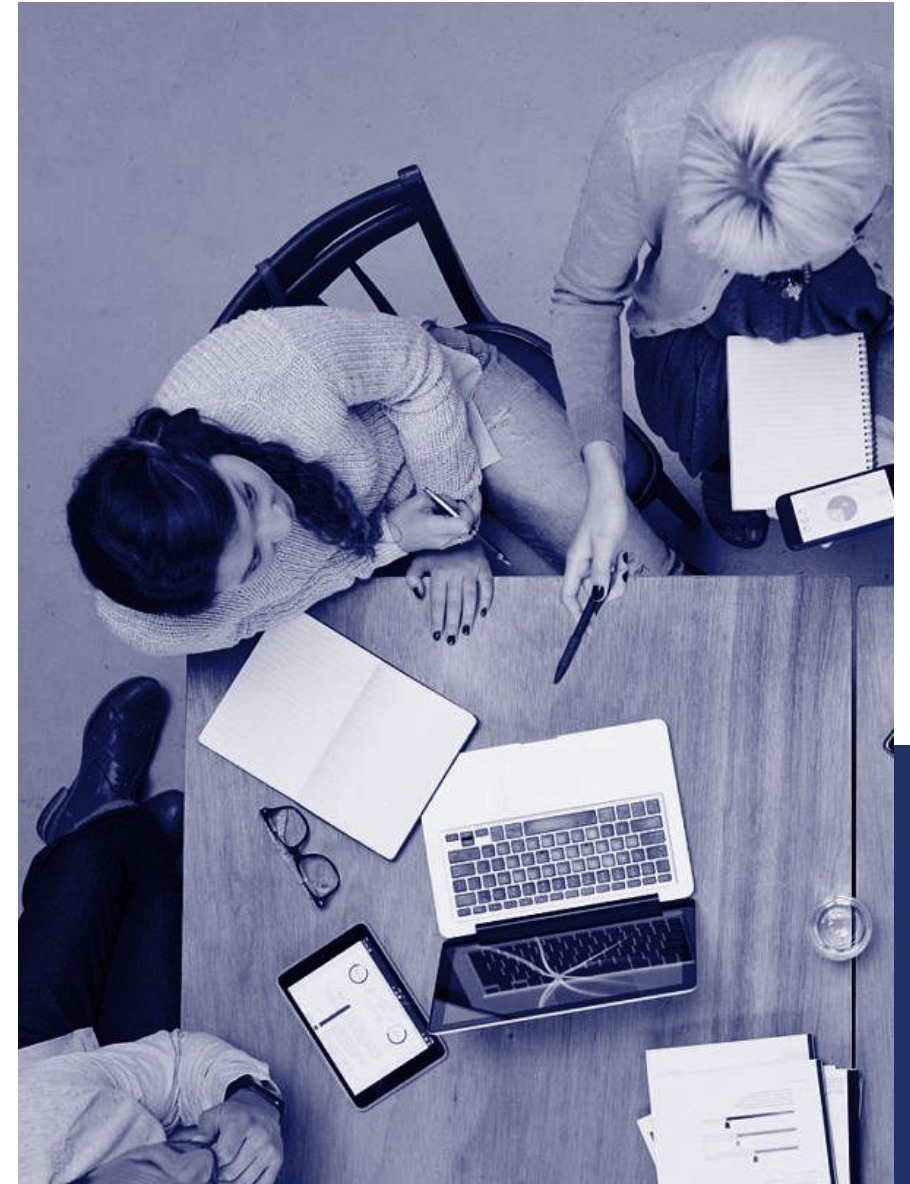
Considerations in Developing a Solution

- Determine root causes for the issues within the current game and event structures
- Provide incentives to uphold student-centered behaviors
- Clear guidance for Event Partners in removing teams breaking the rules
- Minimize the impact on teams following the rules
- Work within current functionality of Tournament Manager

VIQRC and Competition Integrity

Some Ideas. Any Others? We Want Your Feedback!

- In Tournament Manager, push a button to remove the offending team and extend 'placebo' matches to finish quals
 - How to choose teams for these matches to make it fair for all teams?
- For elimination/finals matches, if an alliance hasn't yet taken the field, give them the next highest ranked un-allianced team to be their alliance partner
 - What if there are no un-allianced teams remaining?



Contact

We are here for you

Event Partners are the core of our competition program here at the REC Foundation. Please reach out to us with any questions or concerns. Thank you for all of your support.

Address

1519 Interstate 30 West
Greenville, Texas 75402

Phone & Email

903 401 8088
support@recf.org

Resources



EVENT PARTNER SUMMIT 2024

EVENT PARTNER SUMMIT 2024

Thank You

RECF.ORG

